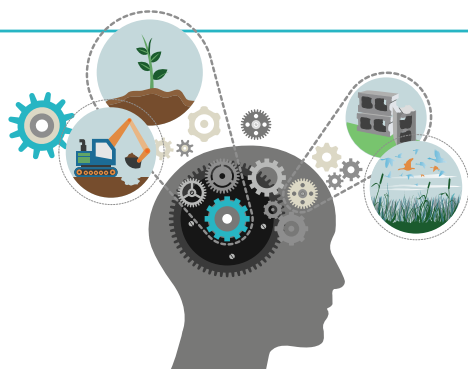


CAD BULLETIN



NUMBER 2 OCTOBER 2024



CAD Bulletin Overview

Welcome to the Maryland Port Administration (MPA) Confined Aquatic Disposal (CAD) Bulletin. This newsletter is designed to provide community members with timely and accurate information about CAD, upcoming meetings, and regulatory updates. We hope you find this information helpful. If you have any questions, comments, or topics you'd like us to cover in upcoming issues, **Rachael Gilde** at rgilde@marylandports.com

LATEST NEWS

New CAD Subcommittee: The MPA created a new CAD subcommittee of the Bay Enhancement Working Group (BEWG) to make recommendations on using CAD as a strategy for meeting Maryland's long-term dredged material placement needs. The objectives of this subcommittee include reviewing the overall concept, need, viability, logistics, and available options associated with a second CAD pilot project, and evaluating associated environmental and socioeconomic impacts and potential environmental justice concerns.

Additional information, including a list of members, can be found [here](#).

REGULATORY UPDATES

MPA seeks to investigate an additional CAD pilot project to gain additional information about how dredged material can be safely placed. If this pilot project is deemed feasible and an acceptable site is selected, MPA will work under the oversight of the Maryland Department of the Environment (MDE) in coordination with other state and federal regulatory agencies. Your feedback is crucial and will be incorporated and addressed throughout the vetting of this alternative method of dredged material management.

MEET THE CAD SPECIALIST



Peggy Derrick

Vice President at EA Engineering, Science, and Technology, Inc.

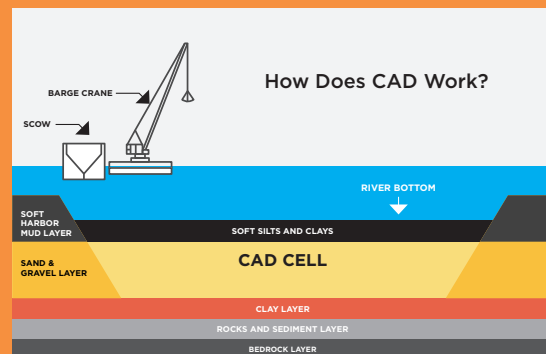
A Senior Scientist with more than 29 years of experience conducting environmental assessments, evaluations, and permitting, Peggy's project work includes physical, chemical, and ecotoxicological evaluations for dredged material, sediment characterization and remediation, environmental impact assessment, sampling plan development, and implementation of ecological studies for federal and private sector construction and restoration projects. Peggy is facilitating the BEWG CAD Subcommittee.

CAD BACKGROUND

The Port is mandated to have a forward-looking 20-year plan, which includes identifying and utilizing locations for dredged material placement sites. Finding new locations for dredged material placement in the Baltimore region is challenging. Confined Aquatic Disposal (CAD) is a technique for dredged material placement that has been used successfully in other ports in the U.S. Rather than storing dredged material on land, CAD involves placing and containing dredged material underwater.

Learn more about CAD [here](#).

- 1 Engineers design a CAD cell to reliably contain dredged material. The design is engineered using extensive modeling and scientific information gathered about the site location and the material to be placed.
- 2 First, a depression (or cell) is excavated into the sand layer of the river bottom.
- 3 Excavated sand is used in a beneficial or innovative way such as wetland creation or structural fill.
- 4 The depression is then filled with dredged material.



UPCOMING EVENTS

October 10

Bay Enhancement Working Group CAD Subcommittee Meeting

[LEARN MORE](#)

October 19

Cox Creek Open House

MPA is pleased to offer the public the opportunity to explore Cox Creek, only accessible a few times a year, including during this family-friendly Open House with opportunities to engage with MPA project managers and enjoy tours, educational games, snacks, and more!

[LEARN MORE](#)

November 14

Bay Enhancement Working Group CAD Subcommittee Meeting

[LEARN MORE](#)

December 6

Dredged Material Management Program Annual Meeting

The MPA DMMP Annual Meeting, a free meeting open to the public, provides information about all of the DMMP programs, including CAD activity. The Annual meeting also serves as an opportunity for Port officials to communicate their plans for the future.

December 12

Bay Enhancement Working Group CAD Subcommittee Meeting

[LEARN MORE](#)

COX CREEK OPEN HOUSE



RECENT EVENTS

August 21: [BEWG](#) Meeting

The BEWG comprises technical personnel with expertise relevant to environmental issues in the Chesapeake Bay region. They advise MPA and its DMMP partners on environmental and social issues related to dredged material placement. This meeting included an update on the establishment of the CAD Subcommittee, a review of the Innovative Reuse and Beneficial Use (IRBU) Guidance Document, and the formation of a BU Subcommittee. [MEETING NOTES](#)

September 12: [BEWG CAD Subcommittee](#) Meeting

This newly formed CAD Subcommittee was established under the BEWG to explore technical aspects of a second CAD pilot project, including environmental impacts and benefits, location selection, associated regulations, and socioeconomic benefits and effects. At this first meeting, invited organizations and their representatives introduced themselves; MPA reviewed the subcommittee's purpose and goals, dredged material capacity planning and needs, and findings from the 2016 CAD Pilot Project.

September 25: [Citizens Advisory Committee](#) Meeting

The Citizens Advisory Committee represents communities, local governments, recreational and commercial users of the Bay, and environmental interests. It is a communication link between the citizenry and MPA's Harbor Development staff. The CAC advises MPA and its DMMP partners on a wide array of dredging-related topics and issues, including CAD.

Hosting an Information Session

Organizations around the region invite MPA to present information showcasing the most recent information about dredging in Maryland. If you'd like to schedule a session for your group, please complete the inquiry form [HERE](#).

For More Information

- The most up-to-date information about CAD is available on the [MPA website](#).
- **Sign up** to receive information about CAD, including the CAD Bulletin; this newsletter provides information about CAD in Maryland. By signing up, you'll stay informed and connected to the latest developments in the CAD program.
- **Sign up** to receive the EcoPort Newsletter, the MPA newsletter describing Port initiatives, environmental accomplishments and progress to meet more stringent environmental standards.

CONTACT



MPA CAD Project Manager:
Rachael Gilde
rgilde@marylandports.com