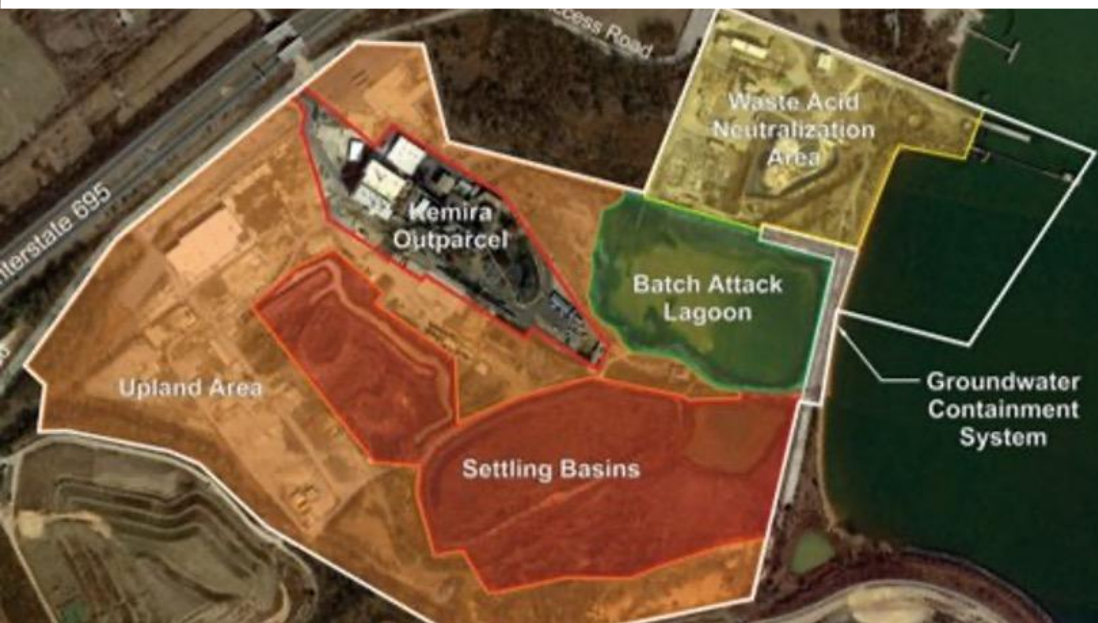


# Sediment to Solutions: Innovative Reuse (IR)



DREDGED  
MATERIAL  
MANAGEMENT  
PROGRAM



IR of dredged material means using sediment removed from marine channels to develop or manufacture commercial, industrial, horticultural, agricultural, or other products. By repurposing this material, MPA and its partners maintain shipping channels while also providing materials for new products.

MPA and the IR program are at the forefront of implementation by using dredged material in sustainable and resourceful applications. With strong community support and increasing outreach efforts, MPA continues to implement its IR strategy which provides clear policy, regulatory, stakeholder engagement, and technical actions.

## COX CREEK SEDIMENT TECHNOLOGY AND REUSE FACILITY

The Cox Creek Sediment Technology and Reuse (STAR) Facility, adjacent to the Cox Creek Dredged Material Containment Facility (DMCF), is being developed on land acquired by MPA in 2022 to serve as a hub for IR and beneficial use (BU) of dredged material. A ten-year site remediation plan is underway, with phased implementation of IR and BU activities as areas are remediated. MPA has issued a Request for Information to explore large-scale IR opportunities and has preliminarily identified potential onsite processes. Early progress includes building a haul road to connect the STAR Facility and Cox Creek DMCF, and initiating permits for a 7-acre geotube dewatering field, where dredged material will be dried and prepared for IR and BU applications.

## INNOVATIVE REUSE GOAL

To promote the long-term viability of the Port of Baltimore by integrating large-scale innovative reuse of dredged material, aimed at addressing capacity recovery, as a fully implemented component of the DMMP. By investing in large-scale, long-term, innovative capacity recovery efforts, MPA is making a commitment to IR and its associated economic, environmental, and social benefits.



# Innovative Reuse

The Innovative Reuse Committee (IRC) was created in 2006 to provide advice on the development of a strategy for recycling and reusing dredged material from the Baltimore Harbor. MPA and the IRC are continuing advancements in IR with the launch of the 2025 Innovative Reuse and Beneficial Use Strategy.

## CHANNELING INNOVATION

Efforts to explore sustainable and feasible applications for Baltimore Harbor material through applied research and development continues to help facilitate making large-scale IR a reality. Companies have developed plans, proposals, and prototypes to use dredged material for commercial applications, including:



Ceramic bricks



Concrete Barriers



Sod with  
engineered soil



Shoreline  
Structures

## COMPANY

## PRODUCT DESCRIPTION

<b>Belden-Eco Products</b>	Ceramic bricks and permeable pavers
<b>Northgate Environmental</b>	Concrete traffic barriers and shoreline protection structures
<b>FasTrak Express</b>	Growing sod with re-engineered soil
<b>Susquehanna Concrete Products</b>	New concrete applications like retaining walls
<b>Harford Industrial Minerals</b>	Sustainable lightweight aggregate
<b>CSI Environmental</b>	Create and enhance coastal resiliency and eco-habitat protection with upland and shoreline berms
<b>University of Maryland</b>	Vegetative earth berms
<b>Northgate Environmental</b>	Cement clinker and supplementary cementitious material
<b>Harbor Rock</b>	Supplementary cementitious material and lightweight aggregate



Dredged Material can be used in:

- Roadway and construction materials
- Manufactured topsoil
- Brownfield remediation
- Flood and coastal protection
- Habitat creation and restoration

## DO YOU HAVE AN INNOVATIVE REUSE PROJECT?

Interested in conducting dredged material IR exploration for your organization? Videos, forms, and additional information about the application process for sampling dredged material can be found on [MPA's Innovative Reuse website](#).



DREDGED MATERIAL MANAGEMENT PROGRAM

[gis.anchorqea.com/MDOTMPA\\_IRBU](https://gis.anchorqea.com/MDOTMPA_IRBU)

